

Rocket® BlueZone Terminal Emulation Suite

migrate. manage. save.



Enterprise-Quality Terminal Emulation without Compromise

Provides proven, enterprise-quality terminal emulation at a fraction of the cost

Offers a robust set of features conversion tools, and best practices to minimize the migration effort

Supports security standards using state-of-the-art encryption and FIPS-certified cryptography

Offers flexible deployment options and flexible pricing

Provides a small footprint for both desktop- and browser-based thin clients

Includes desktop and Web-to-host deployments in a single license

Offers two-tier browser emulation for limitless scalability



the ultimate replacement solution.

Rocket® BlueZone and Rocket® PASSPORT terminal emulation solutions from Rocket® Software are secure full-function desktop and Web browser based terminal emulation suites for IBM zSeries (TN3270), IBM iSeries (TN5250), UNIX/DEC (VT), and Unisys (T27 & UTS) hosts and they include secure File Transfer Protocol (FTP). Whether you need browser or desktop emulation, our software offers thin, fast, robust, and cost-effective emulation. Our terminal emulation solutions provide an integrated module of the industry's most comprehensive legacy-evolution platform.

why rocket terminal emulation?

BlueZone and PASSPORT are all about ease and simplicity. It's easy to purchase, implement, and use while remaining customizable to support ever-changing business requirements. With either product, you can meet all of your terminal emulation and secure file transfer needs through desktop or browser-based deployments.

easy and risk-free migration.

With over 20 years of experience in protocol conversion, we are the experts at converting incumbent technology without interrupting your business operations. We realize that the existing applications you emulate are mission-critical to your business and that downtime and risk when installing replacement software is not an option. If you already have a first-generation emulator installed, the conversion process is smooth and risk-free. We offer features, migration tools, services, and best practices to help you managed the transition—all for a fraction of the cost.

robust functionality.

Unlike most browser emulators, BlueZone supports all the features and functions you find in desktop emulators. You get the best of both worlds—complete display and printing capabilities combined with Web access, fast response times, a small footprint, and easy installation and updates. Whether you need Web or desktop emulation, BlueZone supports all of the key display and printer



features that your current application uses including GDDM Graphics, custom screen sizes up to 98 x 160, 3290 emulation, and multiple sessions

security.

Right out of the box, our BlueZone emulator supports Secure Sockets Layer (SSL v3.0 and TLS v1.0), giving you the highest levels of security and code integrity. It also includes BlueZone Secure FTP, which provides SSL and SSH connectivity to any compliant FTP server, including iSeries, z/OS and z/VM. If your host system does not support SSL, if you want to offload the SSL, or if you want to provide additional security at the edge of your network, just add the optional BlueZone Security Server.

flexibility.

With a single emulator license, you get support for 3270, 5250, VT 52/100/220/320/420, ANSI, SCO-ANSI, WYSE 60, HP character and block mode, and secure File Transfer Protocol connectivity. Each user can make any number of desired connections and you don't have to purchase additional separate products to support multiple protocols. Because BlueZone supports both Web and desktop, you don't have to buy individual licenses. And as your users' needs change over time, you can have a smooth and transparent transition between Web and desktop emulation at no additional cost.

full functionality, yet oh so thin.

With our software's extraordinarily small footprint, the browser-based emulation download can be as little as 2.5 MB. Desktop installation is just over 10 MB for the typical configuration. We don't carry the "baggage" of first-generation emulators, so install time and storage requirements are minimal.

did we mention speed?

No other emulator downloads faster or more easily than BlueZone! Users can be up and running within minutes. In addition, BlueZone launches rapidly and

provides better response times than other emulators.

cost savings.

In addition to dramatically lowering your total cost of ownership through savings from our flexible, all-inclusive licensing, our centralized distribution features mean you will always eliminate network administration and support overhead. We offer concurrent or per-seat licensing as well as lower license and maintenance fees than other first-generation emulators. In addition, all upgrades are included in your annual maintenance subscription.

scalability.

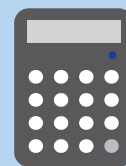
Some competitors' products are three-tier solutions that require specific application servers or Web servers. BlueZone Web-to-host is an infinitely scalable, two-tier solution that is compatible with any enterprise-quality Web server and does not require a specialized application server. BlueZone lets you avoid the scalability limitations of three-tier solutions while reducing hardware and software maintenance.

loads of deployment options.

There are three ways to easily deploy our BlueZone Terminal Emulation Suite:

web-to-host client.

This deployment serves up the BlueZone emulation client when initiated from the browser and runs as a standard Windows application on the end user's desktop. The BlueZone emulation client runs outside of the browser's memory space and is completely independent of the browser. In fact, once the BlueZone emulation client launches, you can close the browser and your host session is unaffected. Using our exclusive Web-to-host Launcher, you can launch BlueZone even if the Web server is unavailable, making Web-to-host as reliable and the desktop deployment.



save big.

Give our Cost Savings Calculator a whirl and see how much you can save by migrating to BlueZone.

[show me my savings](#)



embedded web-to-host client.

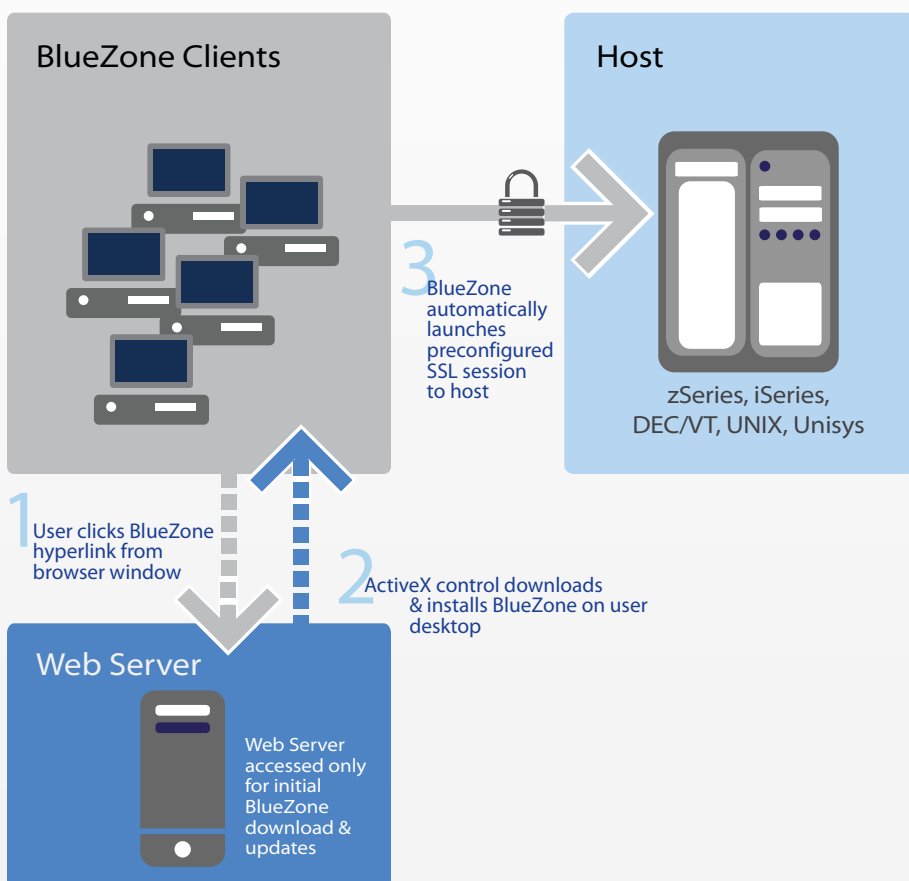
This deployment option puts a brand new spin on emulation by combining the power of the Web with your emulator. BlueZone launches inside the browser window and is embedded either full screen or at a fixed position within the Web page. The position is completely configurable by the BlueZone administrator. With this option, you can design Web pages that include frames, scripts, text, links, buttons, or graphics right on the HTML page in harmony with the embedded BlueZone emulation client.

served desktop client.

This deployment is initially deployed by a Web server and then stored locally so it can be launched directly from the desktop from then on. This is a great option when you want the convenience of Web-based emulator delivery but can't always depend on the availability of your Web server. Just think how easy this can make maintenance—a desktop application that can be configured to check the Web server and download updates automatically.

how bluezone works.

BlueZone Web-to-Host is a simple two-tier terminal emulation solution and the installation couldn't be easier. Simply click on a web link that downloads a pre-configured terminal emulator. After this one-time download, a secure Telnet session is established directly with the host, taking the web server out of the equation altogether.





user feature summary.

user features

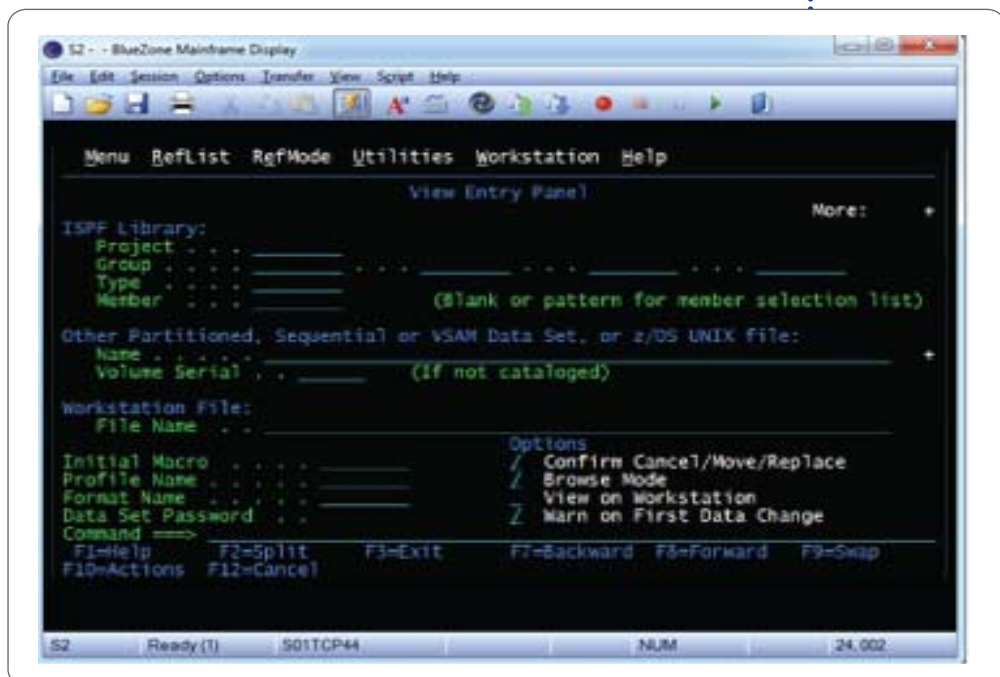
- ❖ Delivers all the functionality of the original application via complete TN3270E (MOD 2-5), TN5250E, VT 52/100/220/320/ 420, ANSI, SCO-ANSI, WYSE 60, and HP character and block mode display emulation and IBM 3287/3812 printer emulation for use inside and outside the firewall.
- ❖ Provides all the familiar Windows automation features, including screen hot spots, macros, scripting, power keys, font auto-sizing, configurable toolbar, automatic host connection failover, auto-connect sessions on start-up, and automatic session reconnection.
- ❖ Provides support for Visual Basic, JavaScript, and other popular scripting languages.
- ❖ Allows users to easily connect to the host application from a Web page hot link.
- ❖ Provides certification for Microsoft Windows 8, 7, Vista, and XP ensuring full compatibility with the Microsoft Windows platform.
- ❖ Supports Internet Explorer, as well as most other popular browsers.
- ❖ Supported on Windows 32 bit and 64 bit OS.
- ❖ Per user ActiveX installation that allows standard users to download, install, and update the BlueZone Web to Host Control.
- ❖ Look-and-feel that is compatible with Microsoft Office
- ❖ Launches multiple display and printer sessions from a single instance of the browser, minimizing the amount of memory used, and allows jumpscreen hot key access to multiple sessions.
- ❖ Ability to run multiple versions of BlueZone on the same PC, ensuring a consistent end user experience.
- ❖ Web-based help text for using or customizing the BlueZone interface with the click of a link.
- ❖ Displays Web-based help text for using or customizing the BlueZone interface with the click of a link.
- ❖ Runs independently of the browser, enabling you to maintain BlueZone connections to the host, even if a browser crashes or you click the "back" button or browse away to another web page.
- ❖ Saves a copy of the print job on a user's PC, allowing reprinting without reconnecting



cloud testdrive.

Want to see our BlueZone Terminal Emulation software for yourself? Take a free cloud testdrive of our web-to-host terminal emulation product.

[take a cloud testdrive](#)





administrator feature summary.



free 30-day trial.

Why take our word for it? See for yourself how BlueZone can work for you. Download our trial today.

[download now](#)

configuration	<ul style="list-style-type: none"> ❖ Master configuration/navigation pane allows you to tailor the user environment with keyboard mapping, fonts, user-specific LU or device names, GUI configurable translation tables, color/attribute mapping, toolbar functions, customizable session descriptions, and more ❖ Text-based configuration files allow administrators to easily find and edit entries in the configuration files 	<ul style="list-style-type: none"> ❖ Allows you to lock configurations to prevent time-consuming help desk calls resulting from inadvertent user tampering ❖ Automatically caches, configures, and updates versions of BlueZone software components in a browser without requiring an administrator to interact with users and without any user intervention
conversion and migration	<ul style="list-style-type: none"> ❖ Offers extensive competitive replacement capabilities including compatible APIs, 	conversion tools, Migration Planning Guides and best practices
multiple user configurations	<ul style="list-style-type: none"> ❖ Provides dynamic device name/logical unit (LU) assignments based on log-in, ensuring users always get the correct display and printer sessions; Supports completely custom configurations assigned on a group or user basis, the number and types of 	<p>sessions, and specific device or LU assignments</p> <ul style="list-style-type: none"> ❖ Does not require the display and printer LUs/devices to be linked together and assigned to specific users
web server distribution	<ul style="list-style-type: none"> ❖ Integrates seamlessly into any industry-standard Web server environment ❖ EXE mode for Web to Host allows Web to Host to launch from configuration file shortcuts 	<ul style="list-style-type: none"> ❖ Features the Web-to-host Wizard that allows you to completely create or edit your Web pages and session configurations quickly and easily by the use of checkboxes, radio buttons, or entry fields
security	<ul style="list-style-type: none"> ❖ Supports Secure Sockets Layer (SSL v3.0 and TLS v1.0 SSL) encryption ❖ Provides SSL authentication using digital client certificates, user-generated as well as third party, store in files, on smart cards, or in the Windows certificate store. Standard authentication technology is built into all BlueZone Software emulation products ❖ Automates end user access to secured networks with configurable firewall and proxy support ❖ Supports z/OS Express Logon (ELF) ❖ Supports FIPS140-2 encryption 	<ul style="list-style-type: none"> ❖ Enables SecureID Telnet/FTP authentication through the optional BlueZone Security Server, providing an added layer of security that is unique among emulation software solutions ❖ Provides NT domain authentication through the optional BlueZone Security Server ❖ Lets you create password protected, encrypted scripts to prevent unauthorized modification or execution of confidential data ❖ Supports Kerberos single sign-on for VT and iSeries only
printing	<ul style="list-style-type: none"> ❖ Automatically detects users' default printer(s), eliminating custom configurations ❖ Secures printer data stream through SSL ❖ Uses a GUI interface that makes it easy to configure, select and deploy multiple printer profiles and determine print status 	<ul style="list-style-type: none"> ❖ Offers Passthrough, API, and TCP/IP Print Server printing to support the full spectrum of printing requirements, for both local and remote resources

technical specifications.

Our BlueZone emulation clients are designed specifically for workstations running the Windows operating system using the WIN32 API to allow workstations in a LAN/WAN environment to communicate with a wide variety of host systems. To function properly, BlueZone must be installed on a workstation that includes the following minimum hardware and software components:

desktop requirements

- ❖ Windows 2000, Windows XP, Windows Vista, or Windows 7
- ❖ Hardware:
 - A processor capable of supporting one of the above operating system and at least the minimum amount of memory required by that operating system
 - 60 MB of free disk space for installation
 - VGA display or better
- ❖ Communications Library requirements:
 - SNA Server Client 3.0 or higher (LUA/RUI only)
 - Any LUA/RUI compliant communications library

BlueZone Web-to-Host does not perform any processing or emulation on the Web server. This eliminates the need for additional processing power beyond that which is necessary to download a 2 MB file to the user's machine when the BlueZone Web-to-Host application is accessed for the first time.

web-to-host requirements

- ❖ Web-to-host Wizard:
 - Windows 2000, Windows XP, Windows Vista, or Windows 7 workstation
 - Windows 2003 Server or Windows 2008 Server platform with a minimum of 200 MB of free disk space
- ❖ Web Server:
 - Any Web server that supports HTML and JavaScript
 - 20 MB free disk space for each site created by the Web-to-Host Wizard
- ❖ Web client:
 - See below

web-to-host browser client requirements for BlueZone 4.1 to 5.0

- | | |
|--|--|
| <p>For Windows Vista/Windows 7:</p> <ul style="list-style-type: none"> ❖ When using the BlueZone ActiveX Web-to-Host Control Module on Internet Explorer 7.0 or higher: <ul style="list-style-type: none"> • Medium security settings or • Custom settings with signed ActiveX controls and ActiveX controls marked "Safe for Scripting"-enabled ❖ When using the BlueZone Java Web-to-Host Control Module: <ul style="list-style-type: none"> • J2RE 1.3 of higher installed and Java-enabled • Tested browsers: Mozilla Firefox 3.0 or higher or Opera 10.0 or higher with identity set to Opera or Mozilla (not IE) | <p>For Windows XP:</p> <ul style="list-style-type: none"> ❖ When using the BlueZone ActiveX Web-to-Host Control Module on Internet Explorer 5.0 or higher: <ul style="list-style-type: none"> • Medium security settings or • Custom settings with signed ActiveX controls and ActiveX controls marked "Safe for Scripting"-enabled ❖ When using the BlueZone Java Web-to-Host Control Module: <ul style="list-style-type: none"> • J2RE 1.3 of higher installed and Java-enabled • Tested browsers: Mozilla Firefox 1.3 or higher or Opera 7.2 or higher with identity set to Opera or Mozilla (not IE) |
|--|--|



-  bluezone.rocketsoftware.com
-  bluezone@rocketsoftware.com
-  twitter.com/rocketbluezone
-  facebook.com/rocketbluezone
-  youtube.com/rocketbluezone
-  www.rocketsoftware.com/bluezone/linkedin